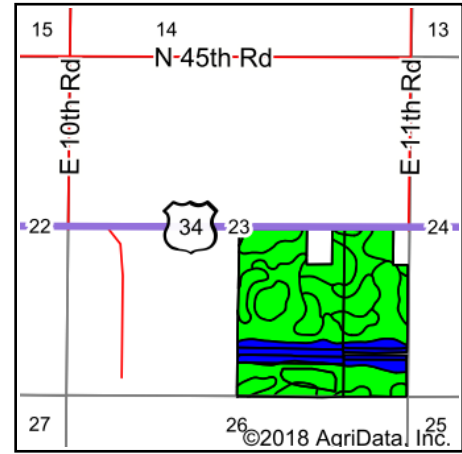
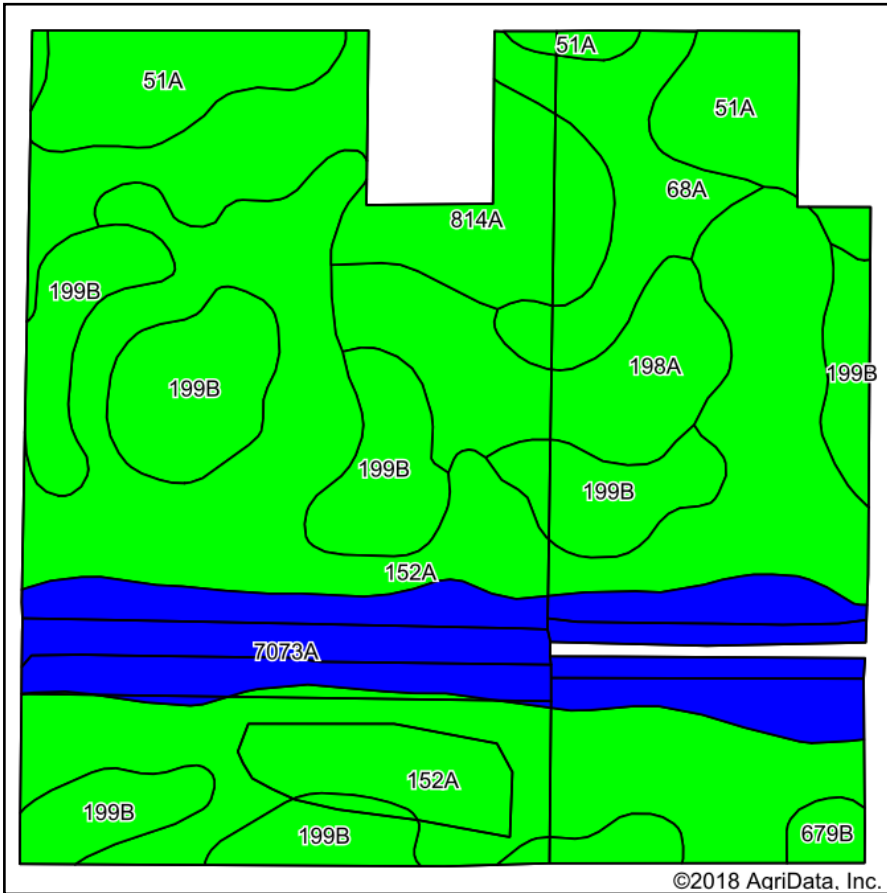


# Soils Map



State: **Illinois**  
 County: **La Salle**  
 Location: **23-36N-2E**  
 Township: **Meriden**  
 Acres: **148.82**  
 Date: **3/16/2018**



Maps Provided By:  
  
 CUSTOMIZED ONLINE MAPPING  
 © Agridata, Inc. 2018 www.AgridataInc.com



**Area Symbol: IL099, Soil Area Version: 13**

Code	Soil Description	Acres	Percent of field	Il. State Productivity Index Legend	Subsoil rooting a	Corn Bu/A	Soybeans Bu/A	Wheat Bu/A	Oats Bu/A b	Sorghum c Bu/A	Alfalfa d hay, T/A	Grass-legume e hay, T/A	Crop productivity index for optimum management
152A	Drummer silty clay loam, 0 to 2 percent slopes	55.94	37.6%		FAV	195	63	73	100	0	0.00	5.64	144
**199B	Plano silt loam, 2 to 5 percent slopes	26.57	17.9%		FAV	**192	**59	**73	**102	0	**6.95	0.00	**141
7073A	Ross silt loam, 0 to 2 percent slopes, rarely flooded	21.18	14.2%		FAV	181	59	71	89	0	0.00	5.39	134
814A	Muscataine-Buckhart silt loams, 0 to 3 percent slopes	14.49	9.7%		FAV	193	62	75	102	0	0.00	6.02	145
51A	Muscataine silt loam, 0 to 2 percent slopes	11.37	7.6%		FAV	200	64	75	104	138	0.00	6.02	147
198A	Elburn silt loam, 0 to 2 percent slopes	10.51	7.1%		FAV	197	61	74	94	0	0.00	5.77	143
68A	Sable silty clay loam, 0 to 2 percent slopes	7.73	5.2%		FAV	192	63	74	99	0	0.00	5.77	143
**679B	Blackberry silt loam, 2 to 5 percent slopes	1.03	0.7%		FAV	**192	**59	**73	**102	0	**6.96	0.00	**141
<b>Weighted Average</b>						<b>192.6</b>	<b>61.5</b>	<b>73.2</b>	<b>98.8</b>	<b>10.5</b>	<b>1.29</b>	<b>4.64</b>	<b>142.2</b>

**Table: Optimum Crop Productivity Ratings for Illinois Soil by K.R. Olson and J.M. Lang, Office of Research, ACES, University of Illinois at Champaign-Urbana.** Version: 1/2/2012 Amended Table S2 B811

Crop yields and productivity indices for optimum management (B811) are maintained at the following NRES web site: <http://soilproductivity.nres.illinois.edu/>

\*\* Indexes adjusted for slope and erosion according to Bulletin 811 Table S3

**a** UNF = unfavorable; FAV = favorable

**b** Soils in the southern region were not rated for oats and are shown with a zero "0".

**c** Soils in the northern region or in both regions were not rated for grain sorghum and are shown with a zero "0".

**d** Soils in the poorly drained group were not rated for alfalfa and are shown with a zero "0".

**e** Soils in the well drained group were not rated for grass-legume and are shown with a zero "0".

\*c: Using Capabilities Class Dominant Condition Aggregation Method

Soils data provided by USDA and NRCS. Soils data provided by University of Illinois at Champaign-Urbana.