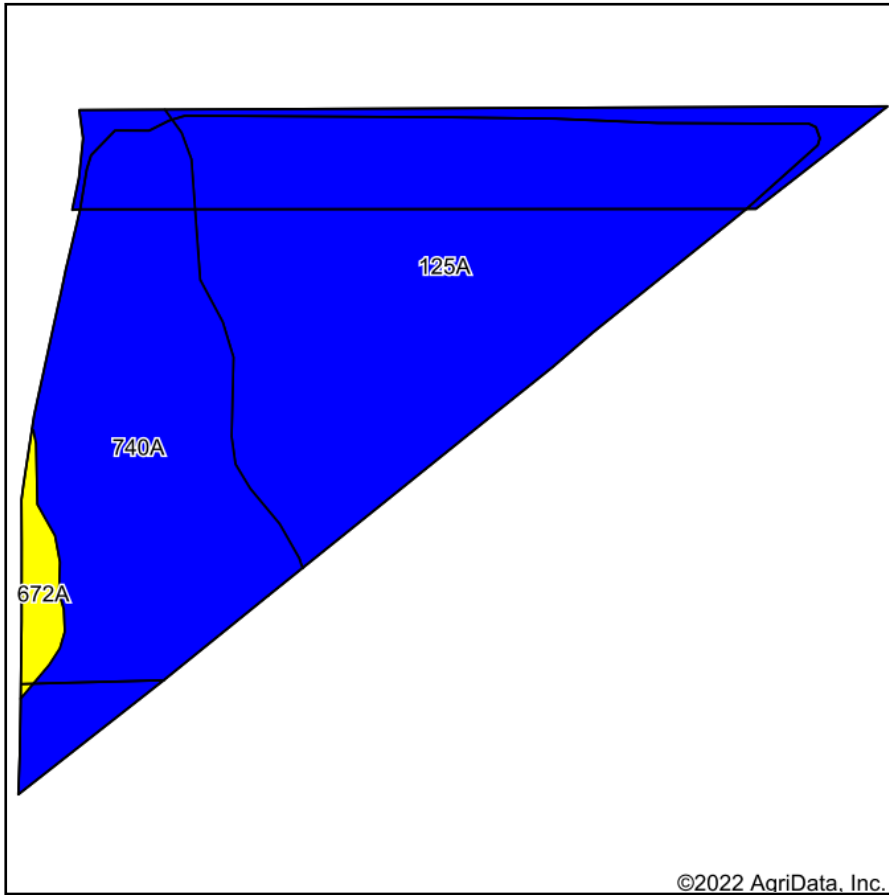
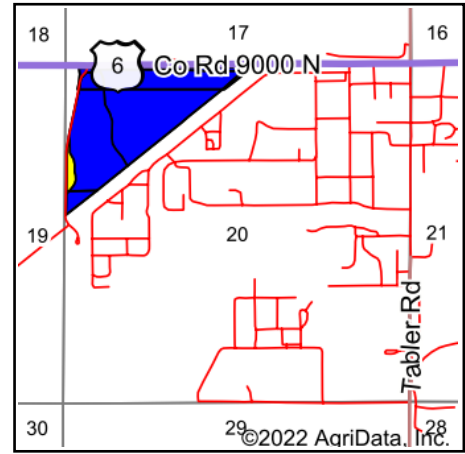


Soils Map



Soils data provided by USDA and NRCS.



State: **Illinois**
 County: **Grundy**
 Location: **20-34N-8E**
 Township: **Aux Sable**
 Acres: **71.89**
 Date: **4/4/2022**



Area Symbol: IL063, Soil Area Version: 16

Code	Soil Description	Acres	Percent of field	Il. State Productivity Index Legend	Water Table	Restrictive Layer	Soil Drainage	Subsoil rooting ^a	Corn Bu/A	Soybeans Bu/A	Crop productivity index for optimum management
125A	Selma loam, 0 to 2 percent slopes	43.34	60.3%		0.5ft.	> 6.5ft.	Poorly drained	FAV	176	57	129
740A	Darroch silt loam, 0 to 2 percent slopes	26.76	37.2%		1.5ft.	> 6.5ft.	Somewhat poorly drained	FAV	177	57	129
672A	Crescent loam, 0 to 2 percent slopes	1.79	2.5%		> 6.5ft.	> 6.5ft.	Well drained	FAV	158	51	117
Weighted Average									175.9	56.9	128.7

Table: Optimum Crop Productivity Ratings for Illinois Soil by K.R. Olson and J.M. Lang, Office of Research, ACES, University of Illinois at Champaign-Urbana. Version: 1/2/2012 Amended Table S2 B811

Crop yields and productivity indices for optimum management (B811) are maintained at the following NRES web site: <http://soilproductivity.nres.illinois.edu/>

** Indexes adjusted for slope and erosion according to Bulletin 811 Table S3

^a UNF = unfavorable; FAV = favorable

Soils data provided by USDA and NRCS. Soils data provided by University of Illinois at Champaign-Urbana.