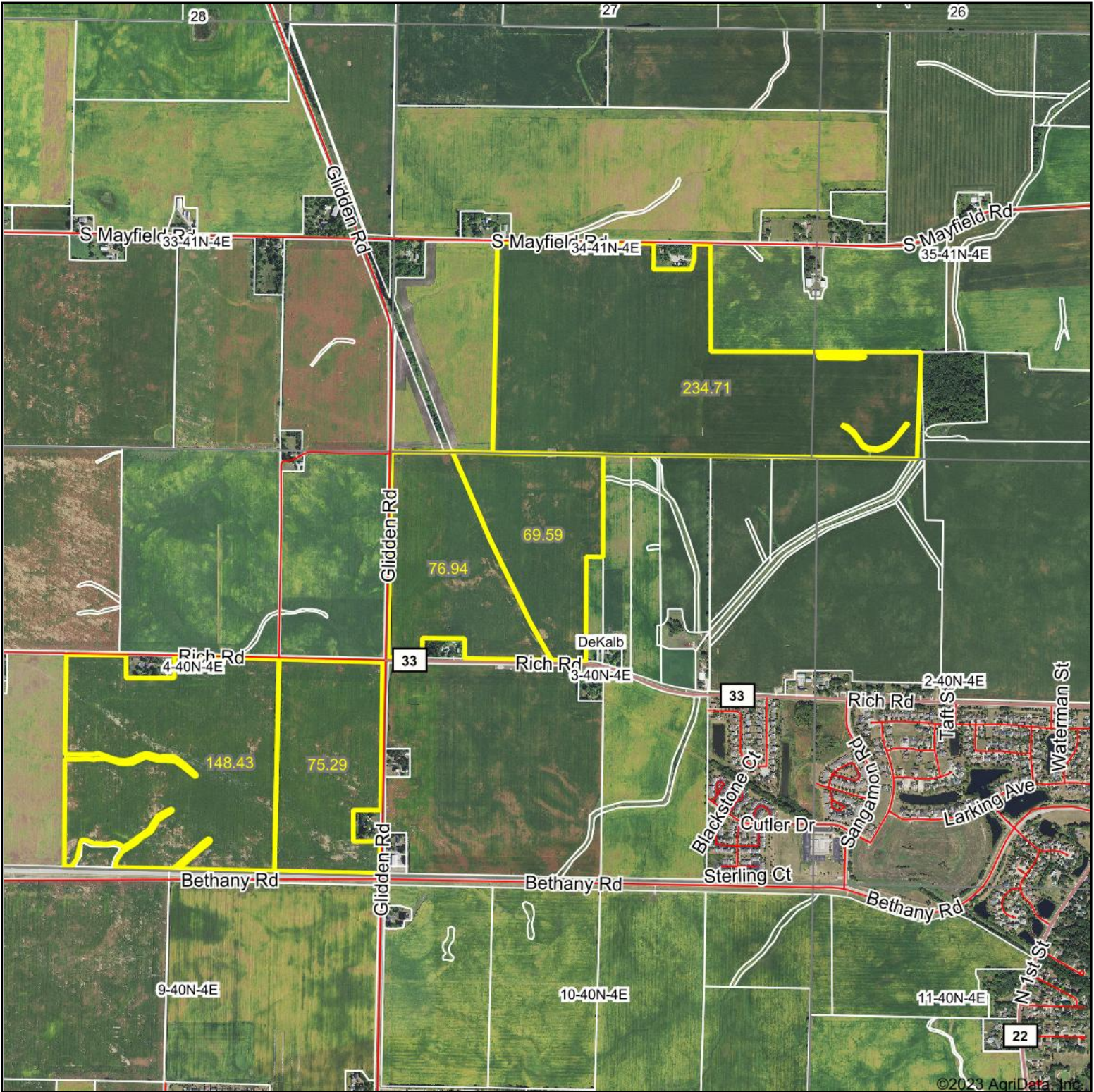


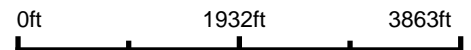
# Aerial Map



©2023 AgriData, Inc.



Boundary Center: 41° 58' 34.59, -88° 46' 6.02



**3-40N-4E**  
**DeKalb County**  
**Illinois**



Maps Provided By:



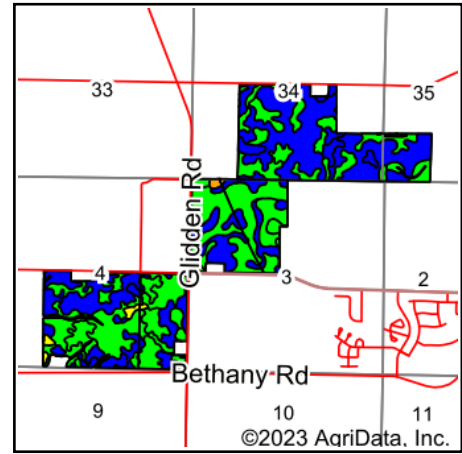
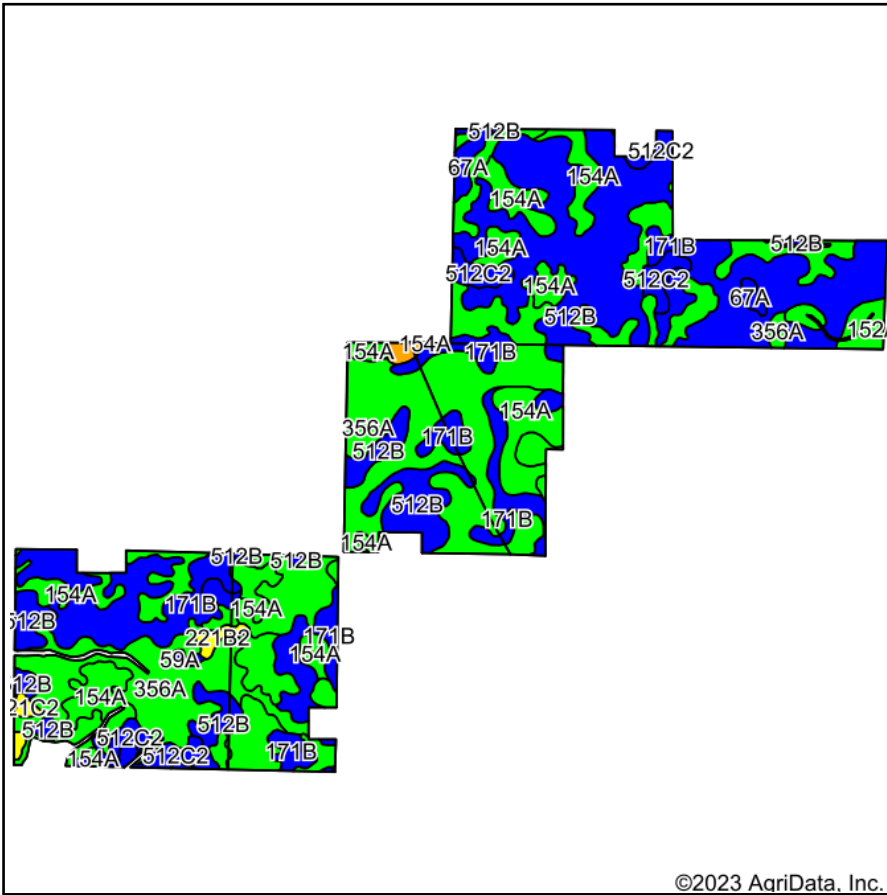
© AgriData, Inc. 2023 www.AgriDataInc.com

7/25/2023

Field borders provided by Farm Service Agency as of 5/21/2008.



# Soils Map



State: **Illinois**  
 County: **DeKalb**  
 Location: **3-40N-4E**  
 Township: **DeKalb**  
 Acres: **604.96**  
 Date: **7/25/2023**



Soils data provided by USDA and NRCS.

©2023 AgriData, Inc.

Area Symbol: IL037, Soil Area Version: 17

Code	Soil Description	Acres	Percent of field	Il. State Productivity Index Legend	Water Table	Restrictive Layer	Soil Drainage	Subsoil rooting a	Corn Bu/A	Soybeans Bu/A	Crop productivity index for optimum management
356A	Elpaso silty clay loam, 0 to 2 percent slopes	208.92	34.5%		0.5ft.	> 6.5ft.	Poorly drained	FAV	195	63	144
**512B	Danabrook silt loam, 2 to 5 percent slopes	185.86	30.7%		2.7ft.	> 6.5ft.	Moderately well drained	FAV	**185	**58	**137
154A	Flanagan silt loam, 0 to 2 percent slopes	94.07	15.5%		1.5ft.	> 6.5ft.	Somewhat poorly drained	FAV	194	63	144
**171B	Catlin silt loam, 2 to 5 percent slopes	76.84	12.7%		2.6ft.	> 6.5ft.	Moderately well drained	FAV	**185	**58	**137
**512C2	Danabrook silt loam, 5 to 10 percent slopes, eroded	18.73	3.1%		2.7ft.	> 6.5ft.	Moderately well drained	FAV	**174	**55	**128
67A	Harpster silty clay loam, 0 to 2 percent slopes	6.37	1.1%		0.5ft.	> 6.5ft.	Poorly drained	FAV	182	57	133
152A	Drummer silty clay loam, 0 to 2 percent slopes	6.00	1.0%		0.5ft.	> 6.5ft.	Poorly drained	FAV	195	63	144
**221B2	Parr silt loam, 2 to 5 percent slopes, eroded	2.59	0.4%		2.7ft.	> 6.5ft.	Moderately well drained	FAV	**151	**49	**113
**221C2	Parr silt loam, 5 to 10 percent slopes, eroded	2.31	0.4%		2.7ft.	> 6.5ft.	Moderately well drained	FAV	**148	**48	**111
330A	Peotone silty clay loam, 0 to 2 percent slopes	2.13	0.4%		0.5ft.	> 6.5ft.	Very poorly drained	FAV	164	55	123
59A	Lisbon silt loam, 0 to 2 percent slopes	1.14	0.2%		1.5ft.	> 6.5ft.	Somewhat poorly drained	FAV	188	59	136

	<b>Weighted Average</b>	<b>189.2</b>	<b>60.4</b>	<b>140</b>
--	-------------------------	--------------	-------------	------------

**Table: Optimum Crop Productivity Ratings for Illinois Soil by K.R. Olson and J.M. Lang, Office of Research, ACES, University of Illinois at Champaign-Urbana.** Version: 1/2/2012 Amended Table S2 B811

Crop yields and productivity indices for optimum management (B811) are maintained at the following NRES web site: <http://soilproductivity.nres.illinois.edu/>

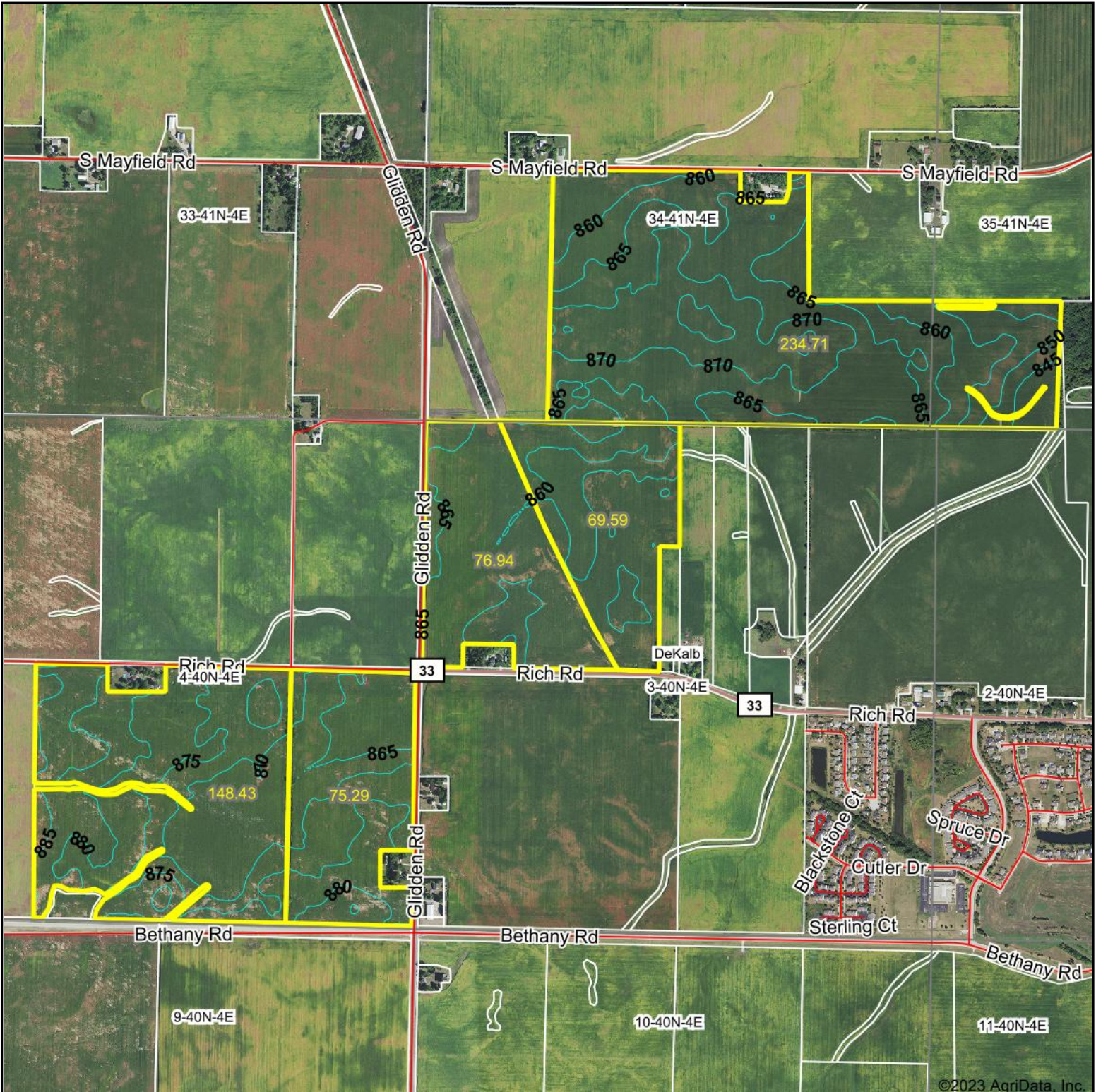
\*\* Indexes adjusted for slope and erosion according to Bulletin 811 Table S3

**a** UNF = unfavorable; FAV = favorable

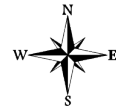
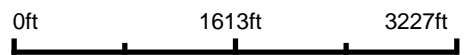
Soils data provided by USDA and NRCS. Soils data provided by University of Illinois at Champaign-Urbana.



# Topography Contours



Source: USGS 10 meter dem  
 Interval(ft): 5.0  
 Min: 841.0  
 Max: 891.5  
 Range: 50.5  
 Average: 867.9  
 Standard Deviation: 8.01 ft



7/25/2023

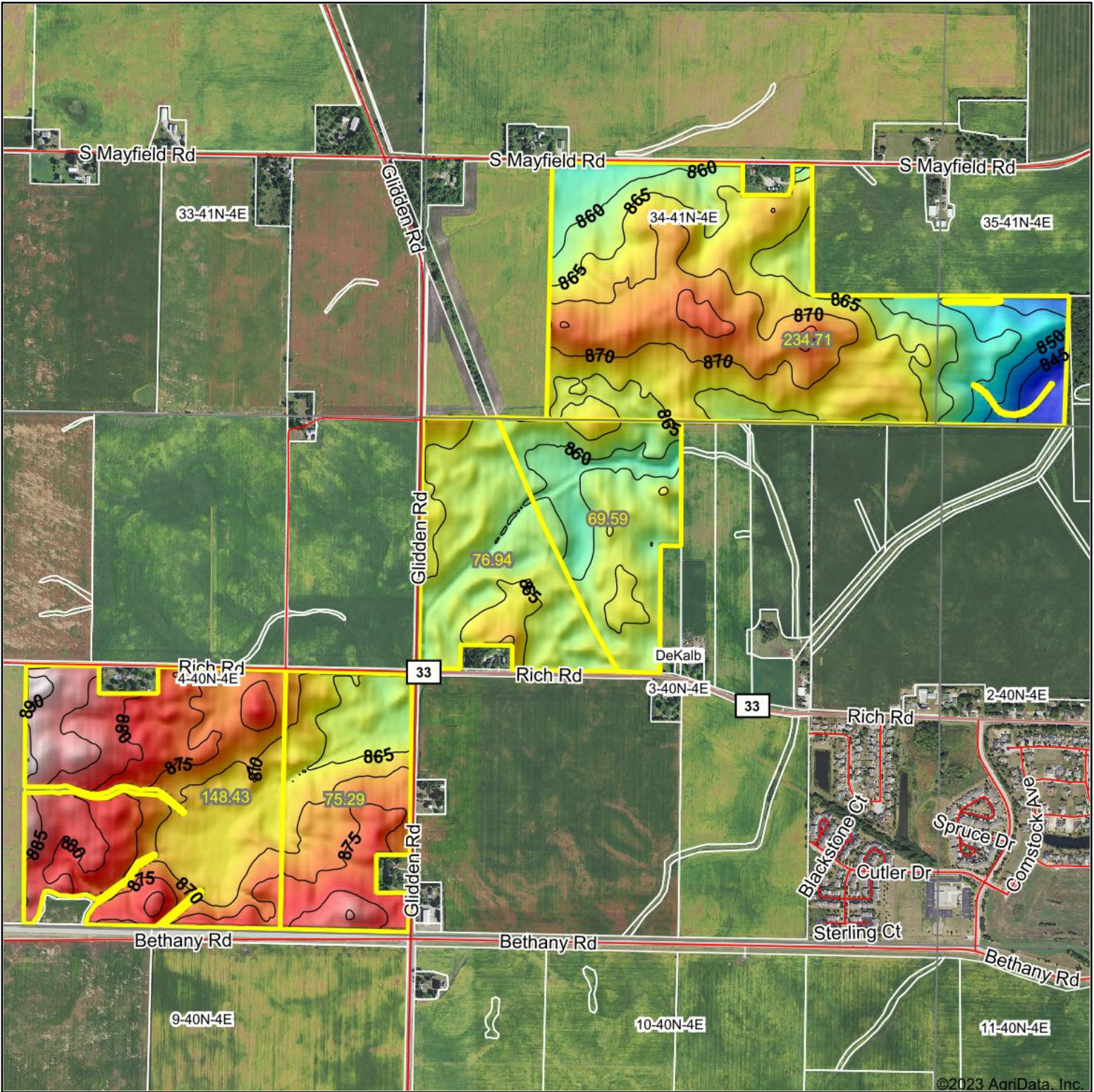
**3-40N-4E**  
**DeKalb County**  
**Illinois**

Boundary Center: 41° 58' 34.59, -88° 46' 6.02

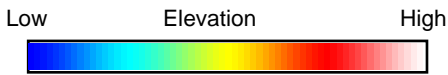
Field borders provided by Farm Service Agency as of 5/21/2008.



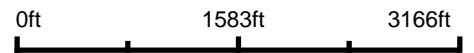
# Topography Hillshade



©2023 AgriData, Inc.



Source: USGS 10 meter dem



Interval(ft): 5

Min: 841.0

Max: 891.5

Range: 50.5

Average: 867.9

Standard Deviation: 8.01 ft



7/25/2023

**3-40N-4E**  
**DeKalb County**  
**Illinois**

Boundary Center: 41° 58' 34.59, -88° 46' 6.02



Maps Provided By:



© AgriData, Inc. 2023 www.AgriDataInc.com

Field borders provided by Farm Service Agency as of 5/21/2008.