

Aerial Map



©2024 AgriData, Inc.



Boundary Center: 41° 32' 22.49, -88° 20' 27.03

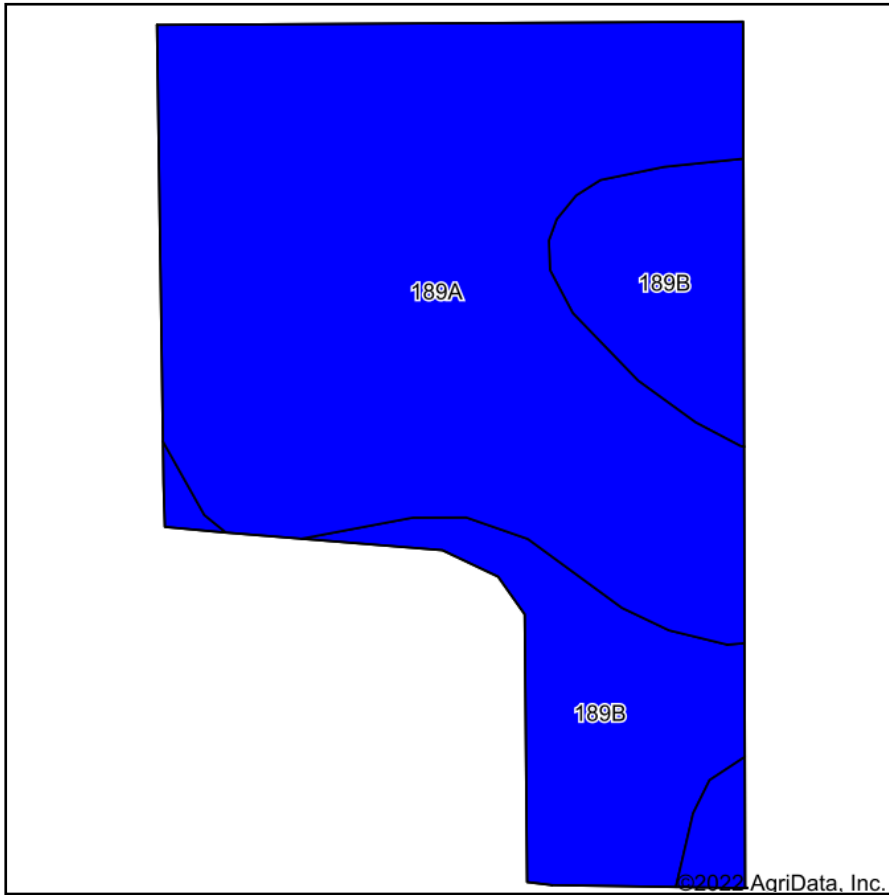


5-35N-8E
Kendall County
Illinois

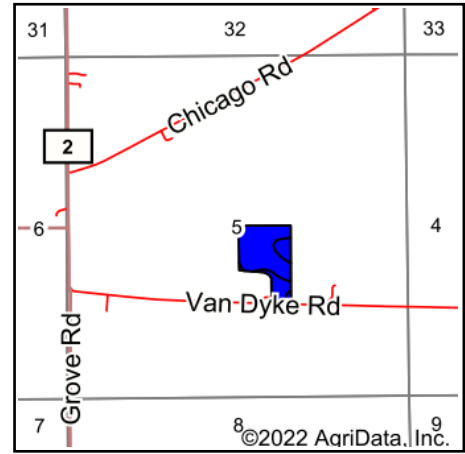


5/1/2024

Soils Map



Soils data provided by USDA and NRCS.



State: **Illinois**
 County: **Kendall**
 Location: **5-35N-8E**
 Township: **Seward**
 Acres: **16.6**
 Date: **4/14/2022**



Area Symbol: IL093, Soil Area Version: 18											
Code	Soil Description	Acres	Percent of field	Il. State Productivity Index Legend	Water Table	Restrictive Layer	Soil Drainage	Subsoil rooting <i>a</i>	Corn Bu/A	Soybeans Bu/A	Crop productivity index for optimum management
189A	Martinton silt loam, 0 to 2 percent slopes	12.08	72.8%		1.5ft.	> 6.5ft.	Somewhat poorly drained	FAV	173	57	130
**189B	Martinton silt loam, 2 to 4 percent slopes	4.52	27.2%		1.5ft.	> 6.5ft.	Somewhat poorly drained	FAV	**171	**56	**129
Weighted Average									172.5	56.7	129.7

Table: Optimum Crop Productivity Ratings for Illinois Soil by K.R. Olson and J.M. Lang, Office of Research, ACES, University of Illinois at Champaign-Urbana. Version: 1/2/2012 Amended Table S2 B811

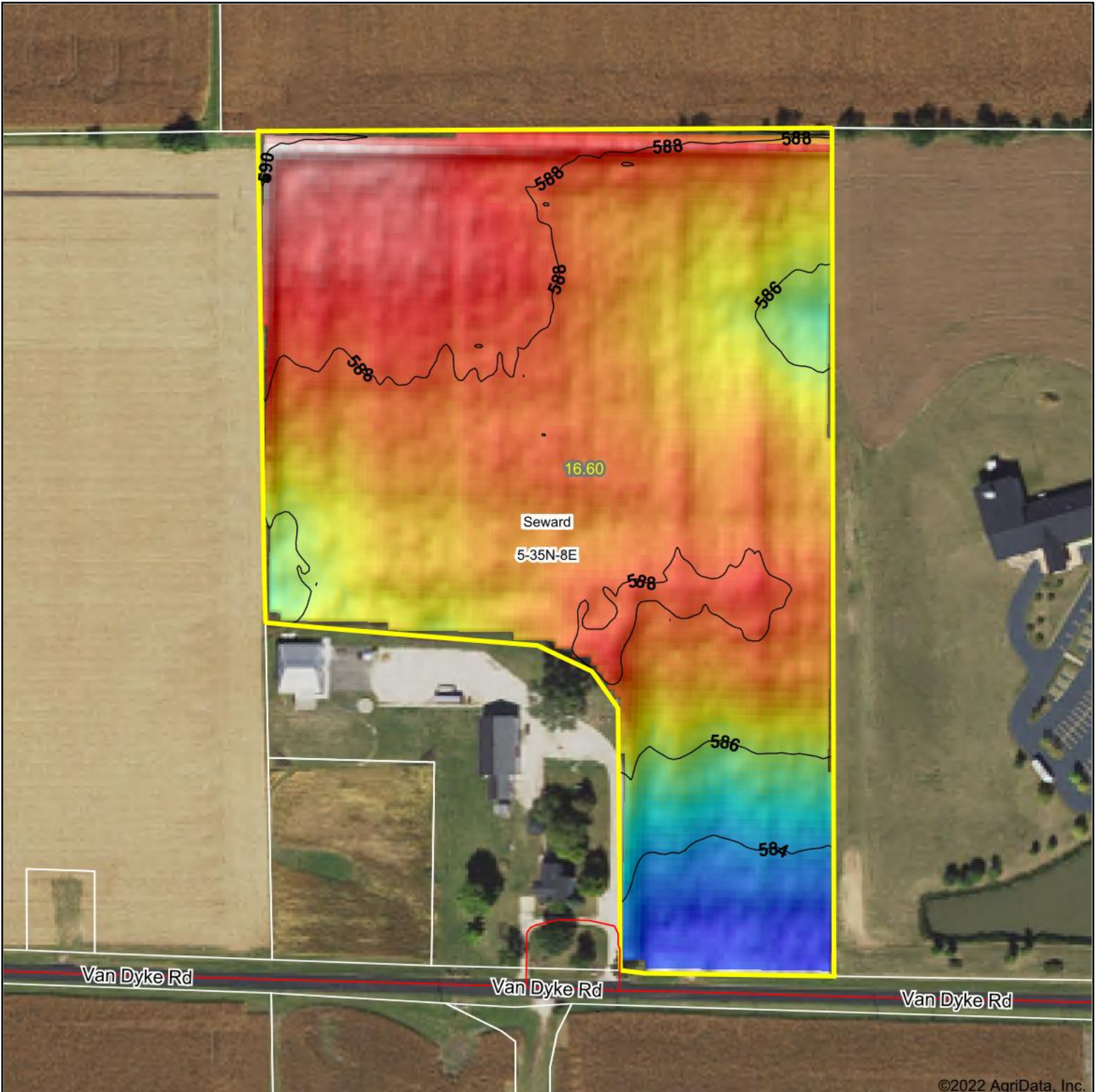
Crop yields and productivity indices for optimum management (B811) are maintained at the following NRES web site: <http://soilproductivity.nres.illinois.edu/>

** Indexes adjusted for slope and erosion according to Bulletin 811 Table S3

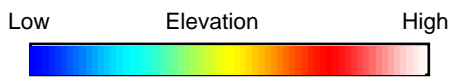
a UNF = unfavorable; FAV = favorable

Soils data provided by USDA and NRCS. Soils data provided by University of Illinois at Champaign-Urbana.

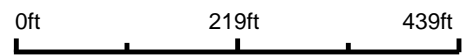
Topography Hillshade



©2022 AgriData, Inc.



Source: USGS 3 meter dem



Interval(ft): 2

Min: 582.6

Max: 590.4

Range: 7.8

Average: 587.1

Standard Deviation: 1.48 ft



4/14/2022

5-35N-8E
Kendall County
Illinois

map center: 41° 32' 20.44, -88° 20' 24.61

Manges Realty, Inc.

Maps Provided By:

surety
CUSTOMIZED ONLINE MAPPING

© AgriData, Inc. 2021 www.AgriDataInc.com

Field borders provided by Farm Service Agency as of 5/21/2008.

09-B

Seward
Township

Sections
5 & 8

T 35 N
R 8 E

Kendall
County,
Illinois

N



0 400 800
Feet

1 inch = 800 feet

Map Locator

Township

Range East
6 7 8

37	1	2	3
36	4	5	6
35	7	8	9

Section

6	5	4	3	2	1
A	B	C	D	E	F
7	8	9	10	11	12
18	17	16	15	14	13
G	H	J	K	L	M
19	20	21	22	23	24
30	29	28	27	26	25
N	O	P	Q	R	S
31	32	33	34	35	36



This map does not represent a survey. No liability is assumed for the accuracy of the data delineated herein, either expressed or implied by Kendall County or its employees. This map is compiled from official records, including plats, surveys, recorded deeds, and contracts, and only contains information required for local government purposes. See the recorded documents for more detailed legal information.

