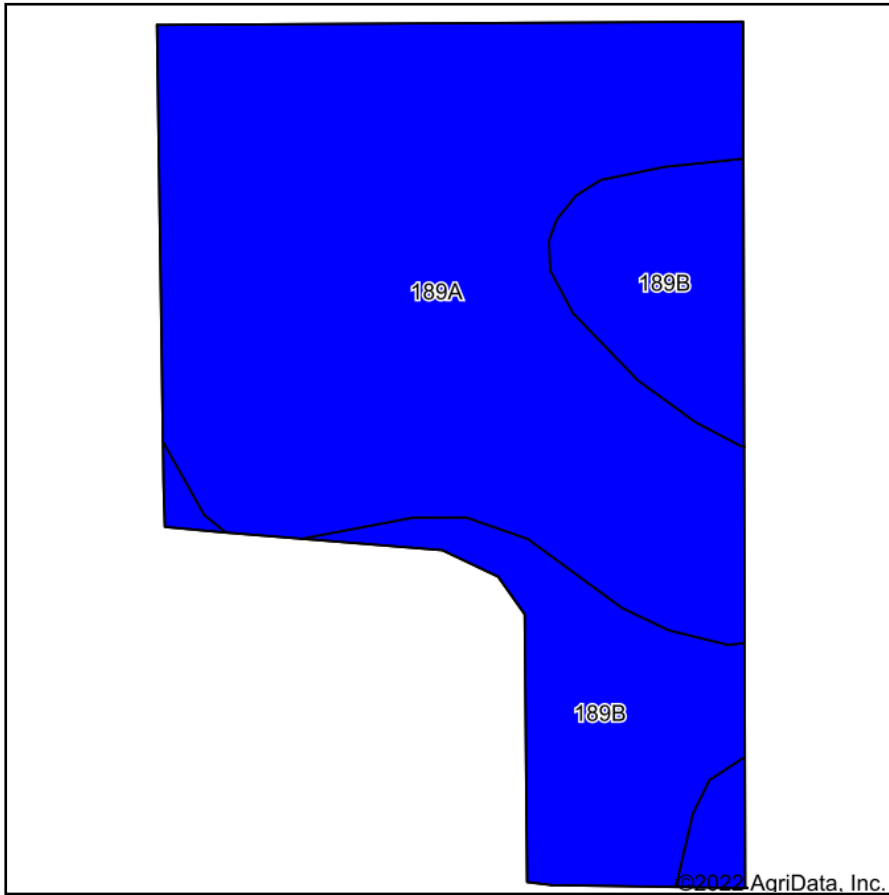
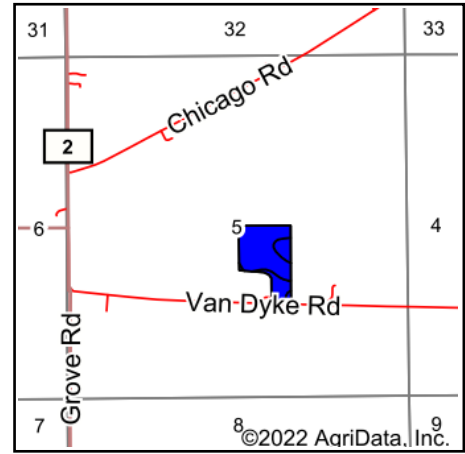


Soils Map



Soils data provided by USDA and NRCS.



State: **Illinois**
 County: **Kendall**
 Location: **5-35N-8E**
 Township: **Seward**
 Acres: **16.6**
 Date: **4/14/2022**



Area Symbol: IL093, Soil Area Version: 18

| Code | Soil Description | Acres | Percent of field | Il. State Productivity Index Legend | Water Table | Restrictive Layer | Soil Drainage | Subsoil rooting <i>a</i> | Corn Bu/A | Soybeans Bu/A | Crop productivity index for optimum management |
|-------------------------|--|-------|------------------|-------------------------------------|-------------|-------------------|-------------------------|--------------------------|--------------|---------------|--|
| 189A | Martinton silt loam, 0 to 2 percent slopes | 12.08 | 72.8% | | 1.5ft. | > 6.5ft. | Somewhat poorly drained | FAV | 173 | 57 | 130 |
| **189B | Martinton silt loam, 2 to 4 percent slopes | 4.52 | 27.2% | | 1.5ft. | > 6.5ft. | Somewhat poorly drained | FAV | **171 | **56 | **129 |
| Weighted Average | | | | | | | | | 172.5 | 56.7 | 129.7 |

Table: Optimum Crop Productivity Ratings for Illinois Soil by K.R. Olson and J.M. Lang, Office of Research, ACES, University of Illinois at Champaign-Urbana. Version: 1/2/2012 Amended Table S2 B811

Crop yields and productivity indices for optimum management (B811) are maintained at the following NRES web site: <http://soilproductivity.nres.illinois.edu/>

** Indexes adjusted for slope and erosion according to Bulletin 811 Table S3

a UNF = unfavorable; FAV = favorable

Soils data provided by USDA and NRCS. Soils data provided by University of Illinois at Champaign-Urbana.