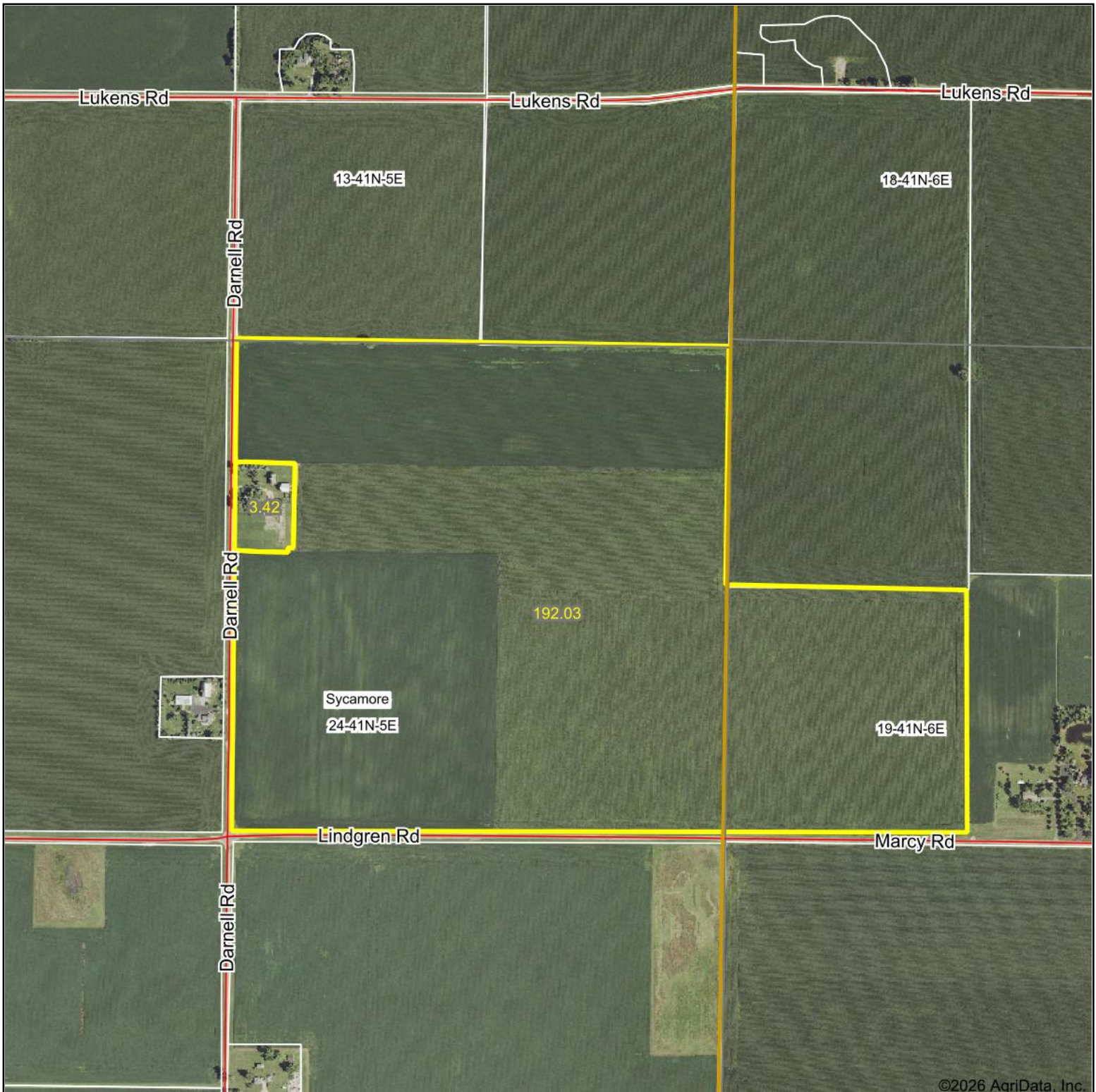
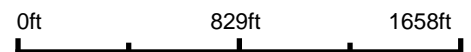


# Aerial Map



Boundary Center: 42° 1' 17.46, -88° 36' 14.48

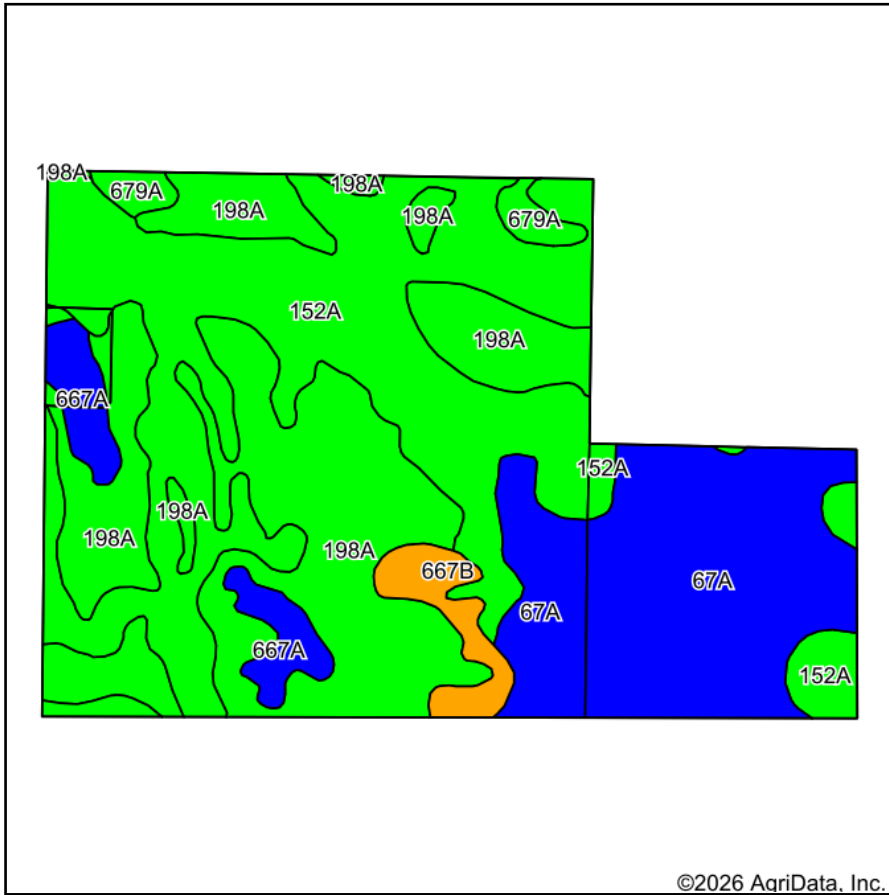


**24-41N-5E**  
**DeKalb County**  
**Illinois**

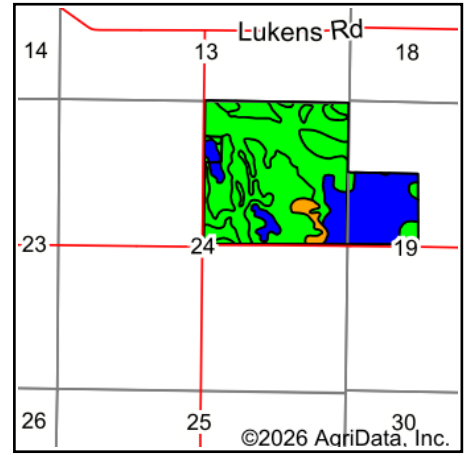


3/17/2026

# Soils Map



©2026 AgriData, Inc.



State: **Illinois**  
 County: **DeKalb**  
 Location: **24-41N-5E**  
 Township: **Sycamore**  
 Acres: **195.45**  
 Date: **3/17/2026**



Soils data provided by USDA and NRCS.

Area Symbol: IL037, Soil Area Version: 20  
 Area Symbol: IL089, Soil Area Version: 19

Code	Soil Description	Acres	Percent of field	Il. State Productivity Index Legend	Water Table	Restrictive Layer	Soil Drainage	Subsoil rooting <sup>a</sup>	Corn Bu/A	Soybeans Bu/A	Crop productivity index for optimum management	*n NCCPI Overall	*n NCCPI Corn	*n NCCPI Soybeans
**152A	Drummer silty clay loam, 0 to 2 percent slopes	68.87	35.4%		0.5ft.	> 6.5ft.	Poorly drained	FAV	**195	**63	**144	82	81	74
198A	Elburn silt loam, 0 to 2 percent slopes	62.44	31.9%		1.5ft.	> 6.5ft.	Somewhat poorly drained	FAV	197	61	143	91	91	78
**67A	Harpster silty clay loam, 0 to 2 percent slopes	33.89	17.3%		0.5ft.	> 6.5ft.	Poorly drained	FAV	**182	**57	**133	79	71	79
**67A	Harpster silty clay loam, 0 to 2 percent slopes	9.76	5.0%		0.5ft.	> 6.5ft.	Poorly drained	FAV	**182	**57	**133	79	71	79
667A	Kaneville silt loam, 0 to 2 percent slopes	7.21	3.7%		2.7ft.	> 6.5ft.	Moderately well drained	FAV	178	55	128	88	88	77

Soils data provided by USDA and NRCS. Soils data provided by University of Illinois at Champaign-Urbana.



Code	Soil Description	Acres	Percent of field	Il. State Productivity Index Legend	Water Table	Restrictive Layer	Soil Drainage	Subsoil rooting a	Corn Bu/A	Soybeans Bu/A	Crop productivity index for optimum management	*n NCCPI Overall	*n NCCPI Corn	*n NCCPI Soybeans
**667B	Kaneville silt loam, 2 to 5 percent slopes	5.14	2.6%		2.7ft.	> 6.5ft.	Moderately well drained	FAV	**176	**54	**127	88	88	78
**152A	Drummer silty clay loam, 0 to 2 percent slopes	4.97	2.5%		0.5ft.	> 6.5ft.	Poorly drained	FAV	**195	**63	**144	82	81	74
679A	Blackberry silt loam, 0 to 2 percent slopes	3.17	1.6%		2.7ft.	> 6.5ft.	Moderately well drained	FAV	194	60	142	91	91	82
<b>Weighted Average</b>									<b>191.6</b>	<b>60.4</b>	<b>140.2</b>	<b>*n 84.7</b>	<b>*n 82.6</b>	<b>*n 76.7</b>

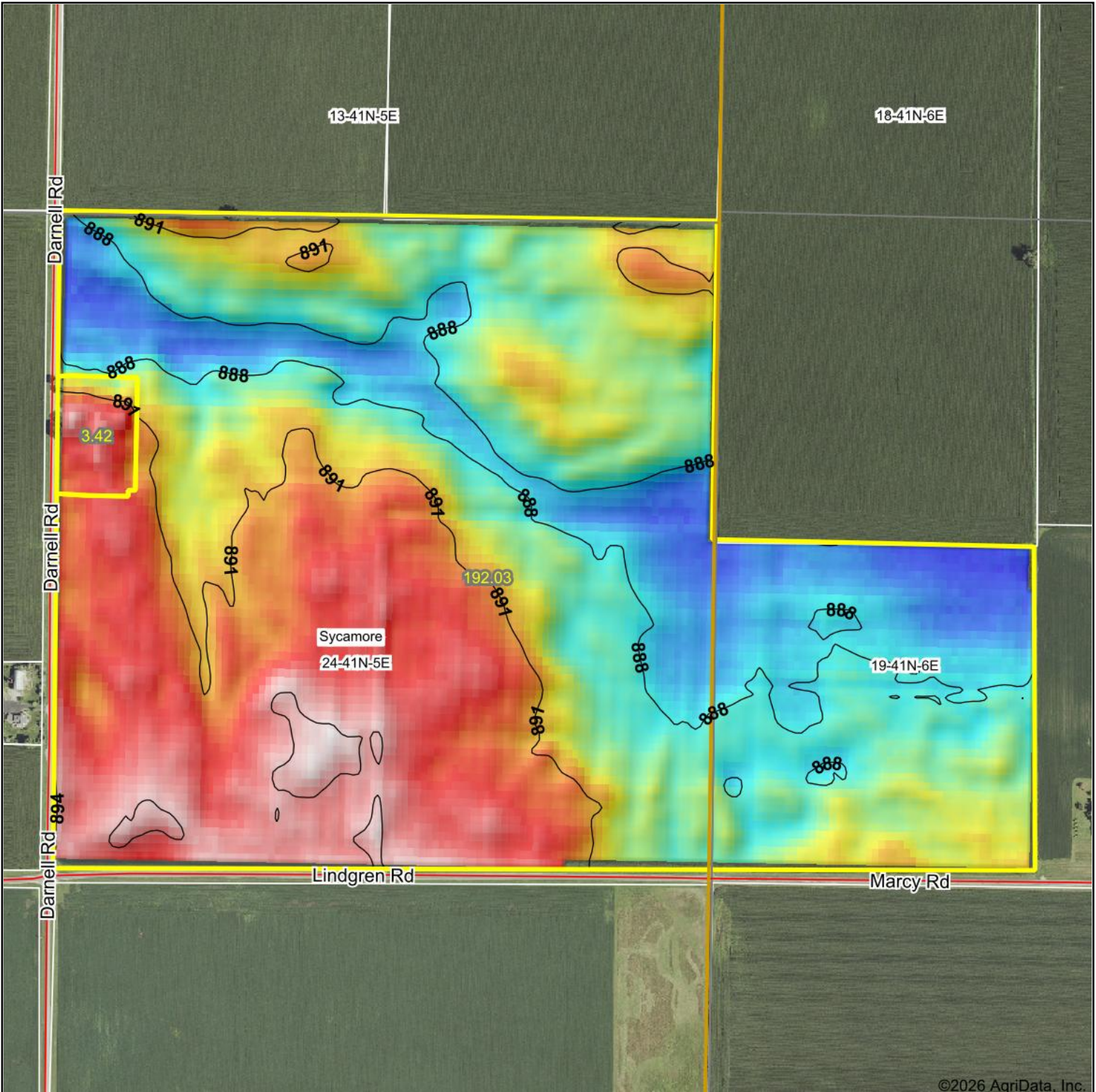
**Table: Optimum Crop Productivity Ratings for Illinois Soil EFOTG are sourced from Bulletin 811 calculated Map Unit Base Yield Indices, and adjusted (Adj) for slope, erosion, flooding, and surface texture.** Publication Date: 02-08-2023

Crop yields and productivity (B811 EFOTG) are maintained at the following USDA web site: 2023 Illinois Soil Productivity and Yield Indices: <https://efotg.sc.egov.usda.gov/#/state/IL/documents/section=2&folder=52809>

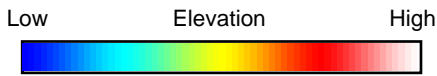
\*\* Base indexes from Bulletin 811 adjusted for slope, erosion, flooding, and surface texture according to the Il. Soils EFOTG

\*n: The aggregation method is "Weighted Average using all components"

# Topography Hillshade



©2026 AgriData, Inc.



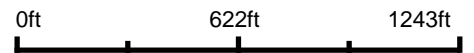
Maps Provided By:



© AgriData, Inc. 2025 www.AgriDataInc.com

Field borders provided by Farm Service Agency as of 5/21/2008.

Source: USGS 10 meter dem  
 Interval(ft): 3  
 Min: 885.9  
 Max: 894.7  
 Range: 8.8  
 Average: 890.1  
 Standard Deviation: 2.13 ft



3/17/2026

**24-41N-5E**  
**DeKalb County**  
**Illinois**

Boundary Center: 42° 1' 17.46, -88° 36' 14.48