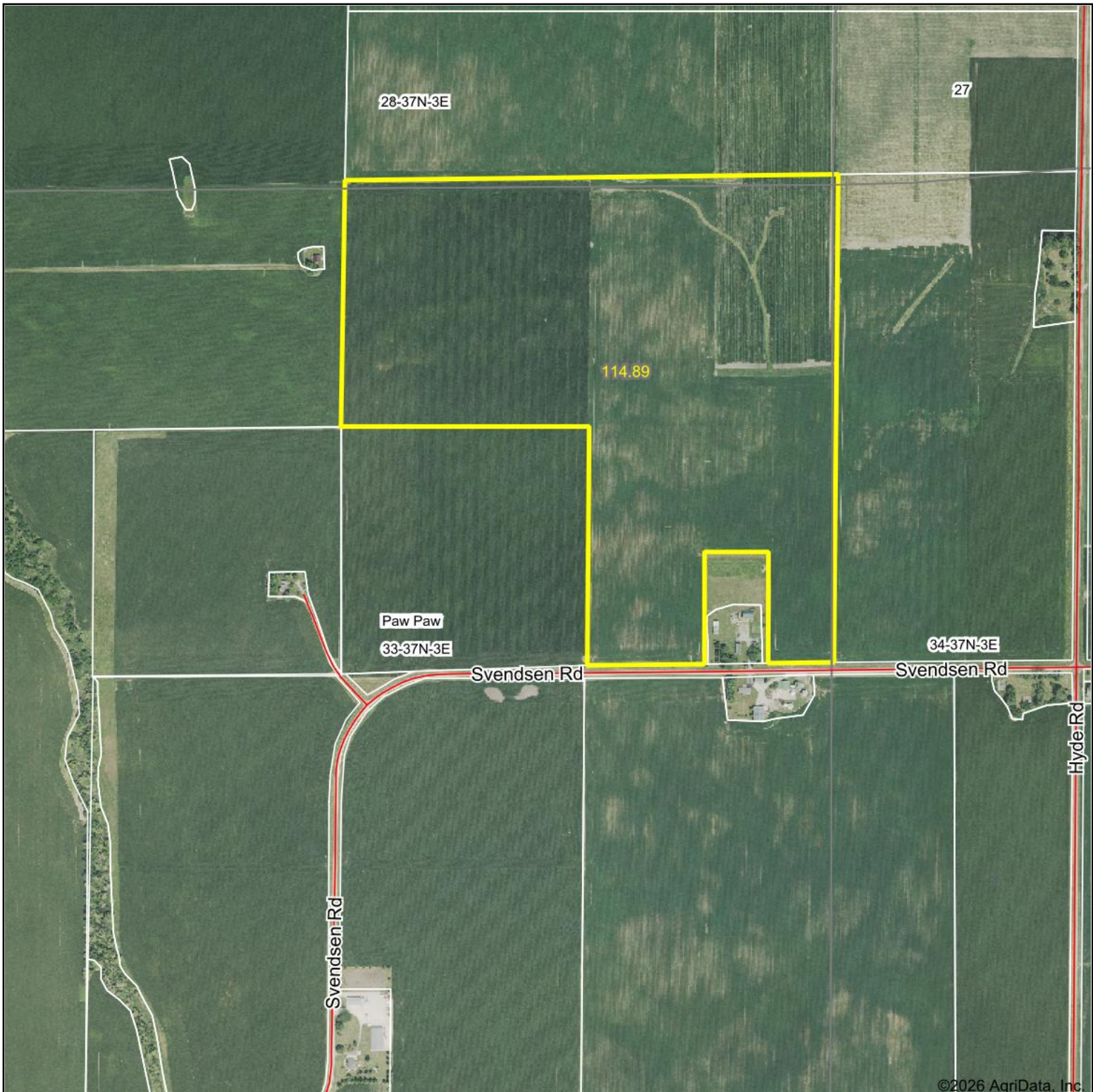


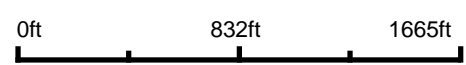
Aerial Map



©2026 AgriData, Inc.



Boundary Center: 41° 38' 26.99, -88° 52' 53.16



33-37N-3E
DeKalb County
Illinois

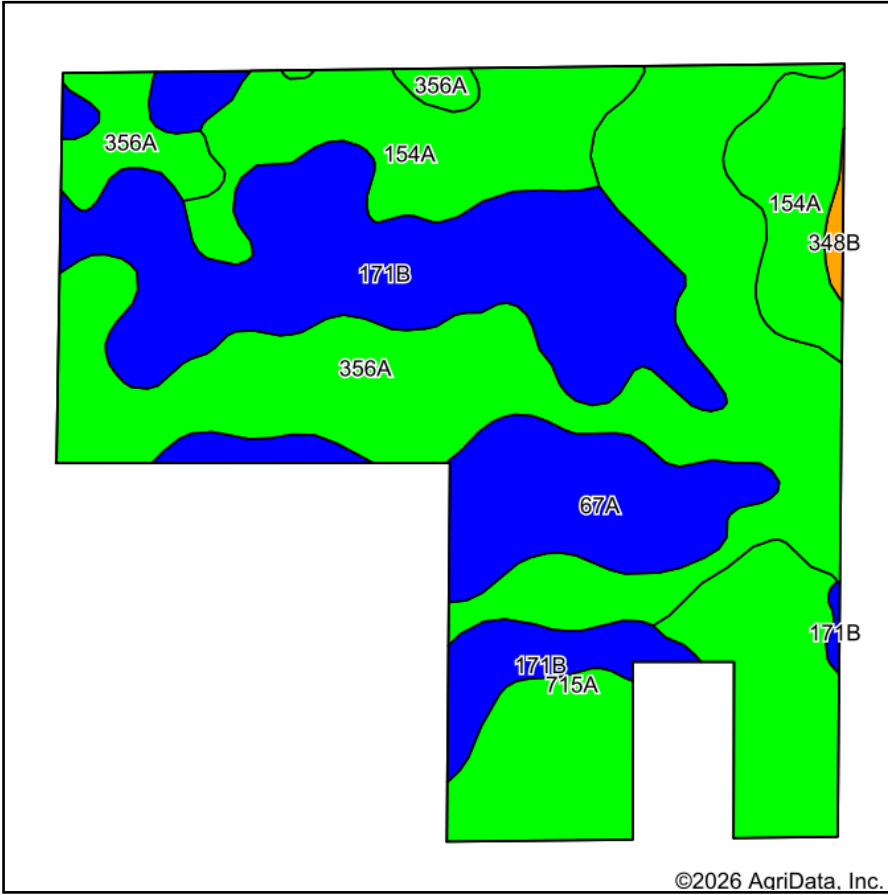


Maps Provided By:
surety
CUSTOMIZED ONLINE MAPPING
© AgriData, Inc. 2025 www.AgriDataInc.com

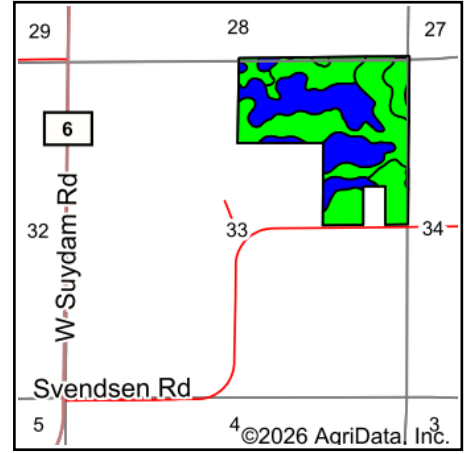
3/17/2026

Field borders provided by Farm Service Agency as of 5/21/2008.

Soils Map



Soils data provided by USDA and NRCS.



State: **Illinois**
 County: **DeKalb**
 Location: **33-37N-3E**
 Township: **Paw Paw**
 Acres: **114.89**
 Date: **3/17/2026**



Area Symbol: IL037, Soil Area Version: 20

Code	Soil Description	Acres	Percent of field	Il. State Productivity Index Legend	Water Table	Restrictive Layer	Soil Drainage	Subsoil rooting a	Corn Bu/A	Soybeans Bu/A	Crop productivity index for optimum management	*n NCCPI Overall	*n NCCPI Corn	*n NCCPI Soybeans
**356A	Elpaso silty clay loam, 0 to 2 percent slopes	40.62	35.3%		0.5ft.	> 6.5ft.	Poorly drained	FAV	**195	**63	**144	88	87	80
**171B	Catlin silt loam, 2 to 5 percent slopes	28.76	25.0%		2.6ft.	> 6.5ft.	Moderately well drained	FAV	**185	**58	**137	77	77	72
154A	Flanagan silt loam, 0 to 2 percent slopes	17.99	15.7%		1.5ft.	> 6.5ft.	Somewhat poorly drained	FAV	194	63	144	90	90	76
715A	Arrowsmith silt loam, 0 to 2 percent slopes	15.82	13.8%		1.5ft.	> 6.5ft.	Somewhat poorly drained	FAV	190	61	140	89	77	88
**67A	Harpster silty clay loam, 0 to 2 percent slopes	11.24	9.8%		0.5ft.	> 6.5ft.	Poorly drained	FAV	**182	**57	**133	79	71	79

Soils data provided by USDA and NRCS. Soils data provided by University of Illinois at Champaign-Urbana.



Code	Soil Description	Acres	Percent of field	Il. State Productivity Index Legend	Water Table	Restrictive Layer	Soil Drainage	Subsoil rooting a	Corn Bu/A	Soybeans Bu/A	Crop productivity index for optimum management	*n NCCPI Overall	*n NCCPI Corn	*n NCCPI Soybeans
**348B	Wingate silt loam, cool mesic, 2 to 5 percent slopes	0.46	0.4%		2.1ft.	> 6.5ft.	Moderately well drained	FAV	**162	**51	**119	82	82	76
Weighted Average									190.2	60.8	140.5	*n 84.8	*n 82	*n 78.4

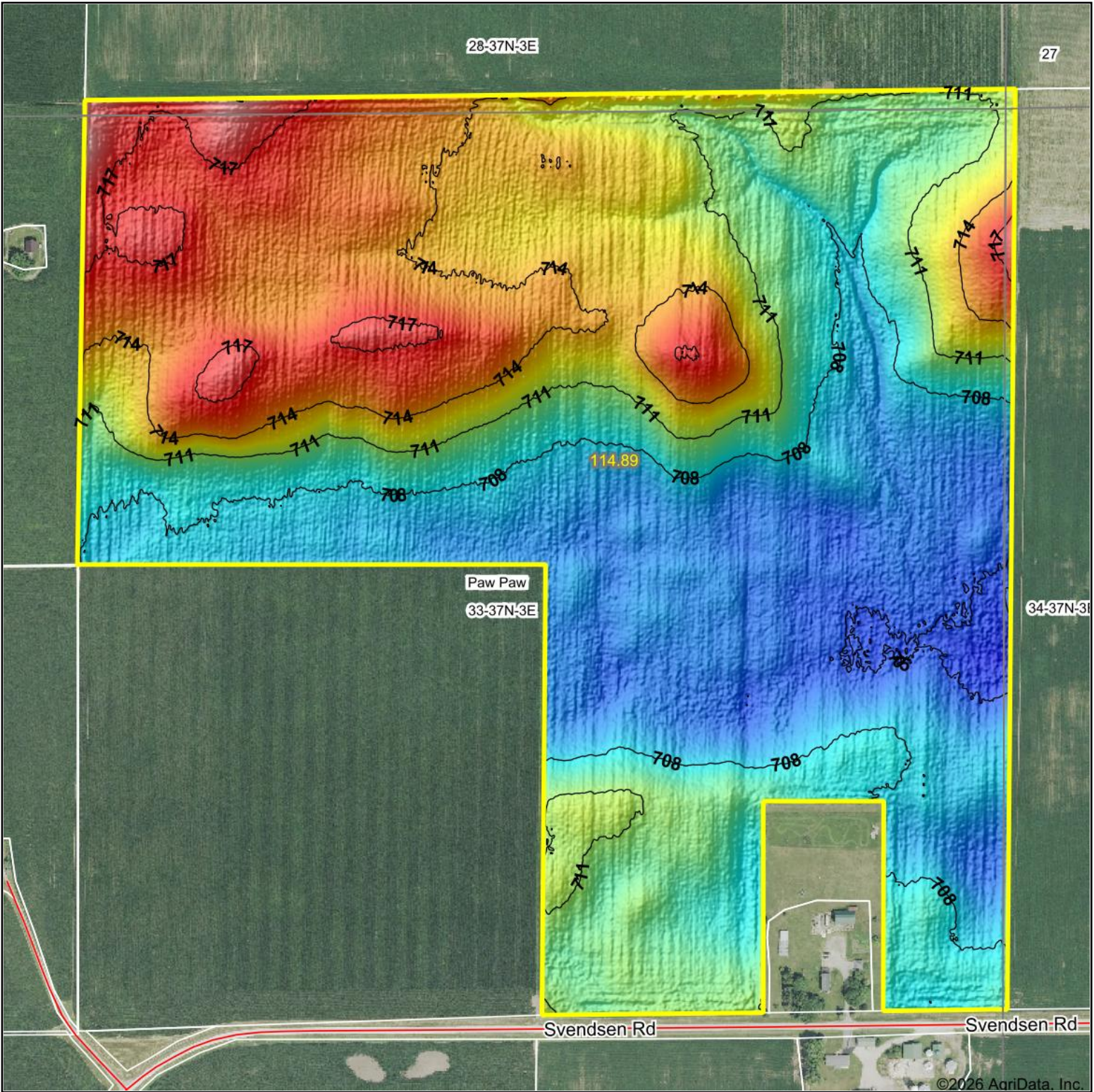
Table: Optimum Crop Productivity Ratings for Illinois Soil EFOTG are sourced from Bulletin 811 calculated Map Unit Base Yield Indices, and adjusted (Adj) for slope, erosion, flooding, and surface texture. Publication Date: 02-08-2023

Crop yields and productivity (B811 EFOTG) are maintained at the following USDA web site: 2023 Illinois Soil Productivity and Yield Indices: <https://efotg.sc.egov.usda.gov/#/state/IL/documents/section=2&folder=52809>

** Base indexes from Bulletin 811 adjusted for slope, erosion, flooding, and surface texture according to the Il. Soils EFOTG

*n: The aggregation method is "Weighted Average using all components"

Topography Hillshade



28-37N-3E

27

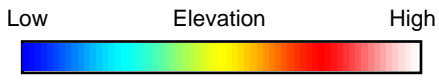
Paw Paw
33-37N-3E

34-37N-3E

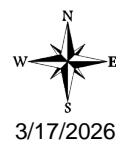
Svendsen Rd

Svendsen Rd

©2026 AgriData, Inc.



Source: USGS 1 meter dem
Interval(ft): 3
Min: 704.1
Max: 720.9
Range: 16.8
Average: 710.4
Standard Deviation: 3.71 ft



33-37N-3E
DeKalb County
Illinois

Boundary Center: 41° 38' 26.99, -88° 52' 53.16

Field borders provided by Farm Service Agency as of 5/21/2008.