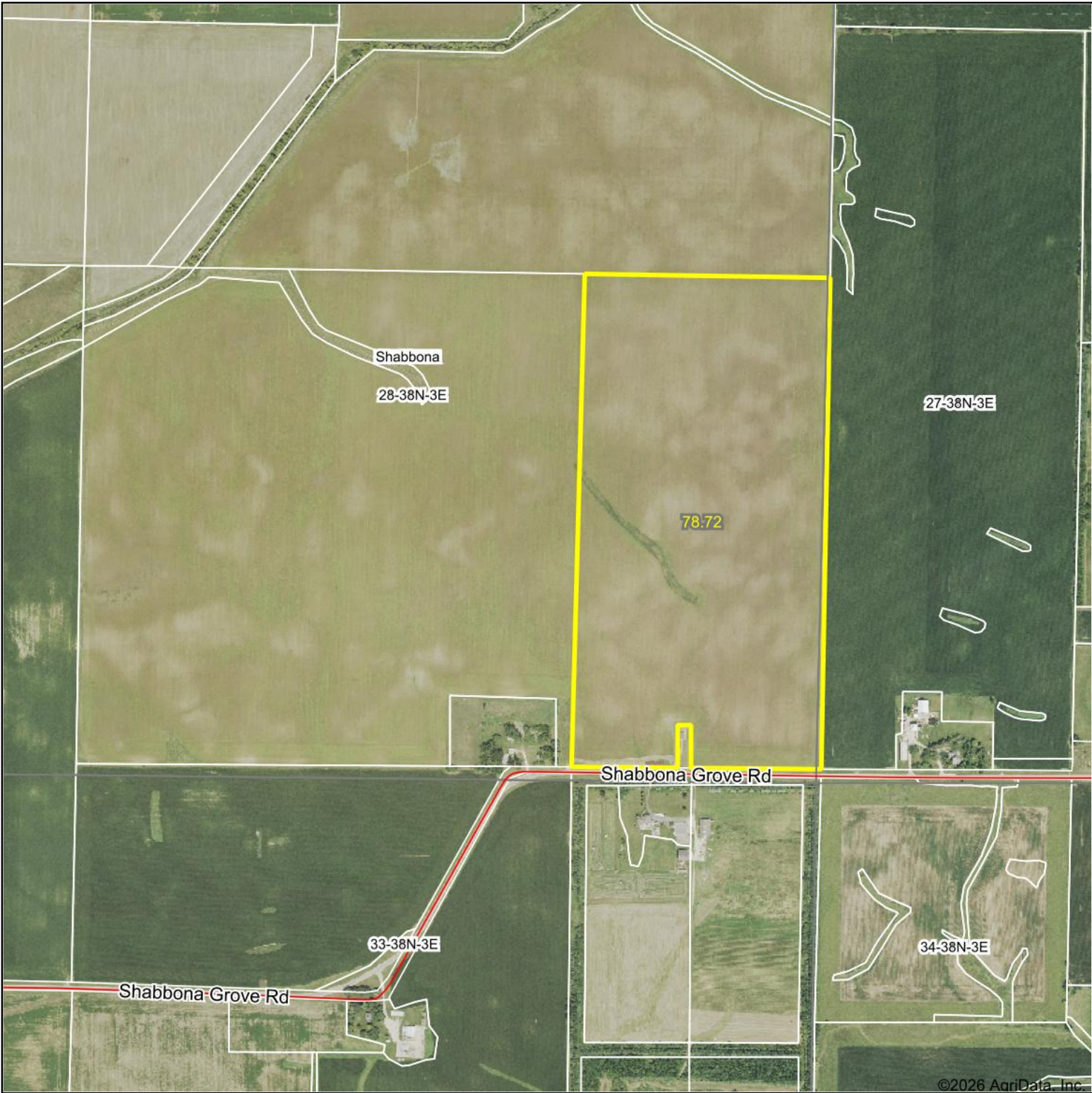


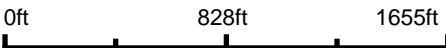
Aerial Map



©2026 AgriData, Inc.



Boundary Center: 41° 44' 8.43, -88° 53' 20.96



28-38N-3E
DeKalb County
Illinois

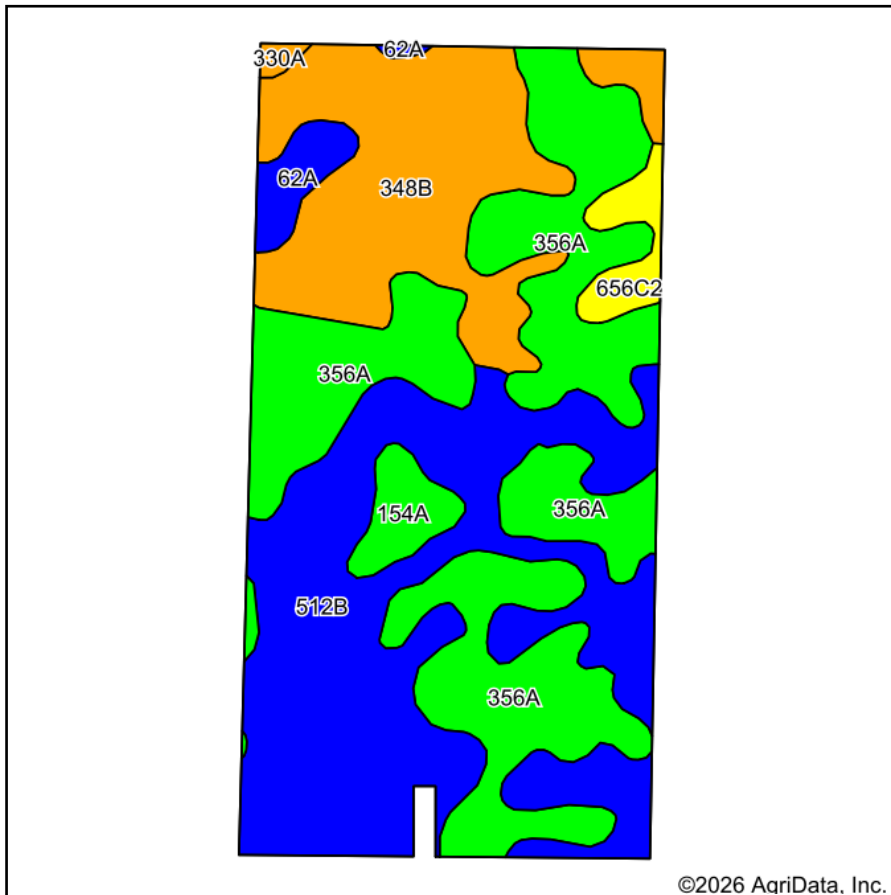


Maps Provided By:
surety
CUSTOMIZED ONLINE MAPPING
© AgriData, Inc. 2025 www.AgriDataInc.com

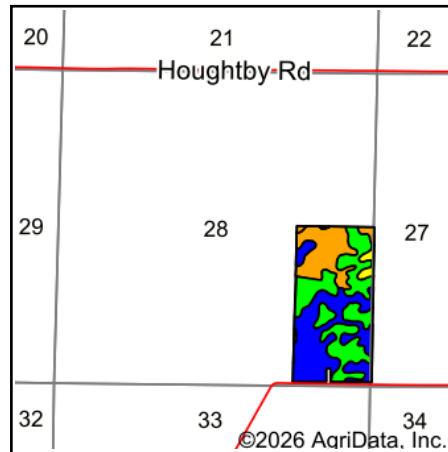
2/27/2026

Field borders provided by Farm Service Agency as of 5/21/2008.

Soils Map



Soils data provided by USDA and NRCS.



State: **Illinois**
 County: **DeKalb**
 Location: **28-38N-3E**
 Township: **Shabbona**
 Acres: **78.72**
 Date: **2/27/2026**



Area Symbol: IL037, Soil Area Version: 20

Code	Soil Description	Acres	Percent of field	Il. State Productivity Index Legend	Water Table	Restrictive Layer	Soil Drainage	Subsoil rooting a	Corn Bu/A	Soybeans Bu/A	Crop productivity index for optimum management	*n NCCPI Overall	*n NCCPI Corn	*n NCCPI Soybeans
**356A	Elpaso silty clay loam, 0 to 2 percent slopes	28.45	36.1%		0.5ft.	> 6.5ft.	Poorly drained	FAV	**195	**63	**144	88	87	8
**512B	Danabrook silt loam, 2 to 5 percent slopes	28.25	35.9%		2.7ft.	> 6.5ft.	Moderately well drained	FAV	**185	**58	**137	88	88	7
**348B	Wingate silt loam, cool mesic, 2 to 5 percent slopes	16.17	20.5%		2.1ft.	> 6.5ft.	Moderately well drained	FAV	**162	**51	**119	82	82	7
154A	Flanagan silt loam, 0 to 2 percent slopes	1.95	2.5%		1.5ft.	> 6.5ft.	Somewhat poorly drained	FAV	194	63	144	90	90	7
**656C2	Octagon silt loam, 4 to 6 percent slopes, eroded	1.83	2.3%		2.7ft.	4ft. (Densic material)	Moderately well drained	FAV	**149	**49	**111	65	65	5

Soils data provided by USDA and NRCS. Soils data provided by University of Illinois at Champaign-Urbana.



Code	Soil Description	Acres	Percent of field	Il. State Productivity Index Legend	Water Table	Restrictive Layer	Soil Drainage	Subsoil rooting a	Corn Bu/A	Soybeans Bu/A	Crop productivity index for optimum management	*n NCCPI Overall	*n NCCPI Corn	*n NCCPI Soybeans
62A	Herbert silt loam, 0 to 2 percent slopes	1.79	2.3%		1.2ft.	> 6.5ft.	Somewhat poorly drained	FAV	179	56	131	75	73	7
**330A	Peotone silty clay loam, 0 to 2 percent slopes	0.28	0.4%		0.5ft.	> 6.5ft.	Very poorly drained	FAV	**164	**55	**123	64	48	4
Weighted Average									183.1	58.2	135.2	*n 85.9	*n 85.4	*n 77.0

Table: Optimum Crop Productivity Ratings for Illinois Soil EFOTG are sourced from Bulletin 811 calculated Map Unit Base Yield Indices, and adjusted (Adj) for slope, erosion, flooding, and surface texture. Publication Date: 02-08-2023

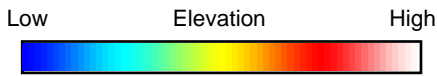
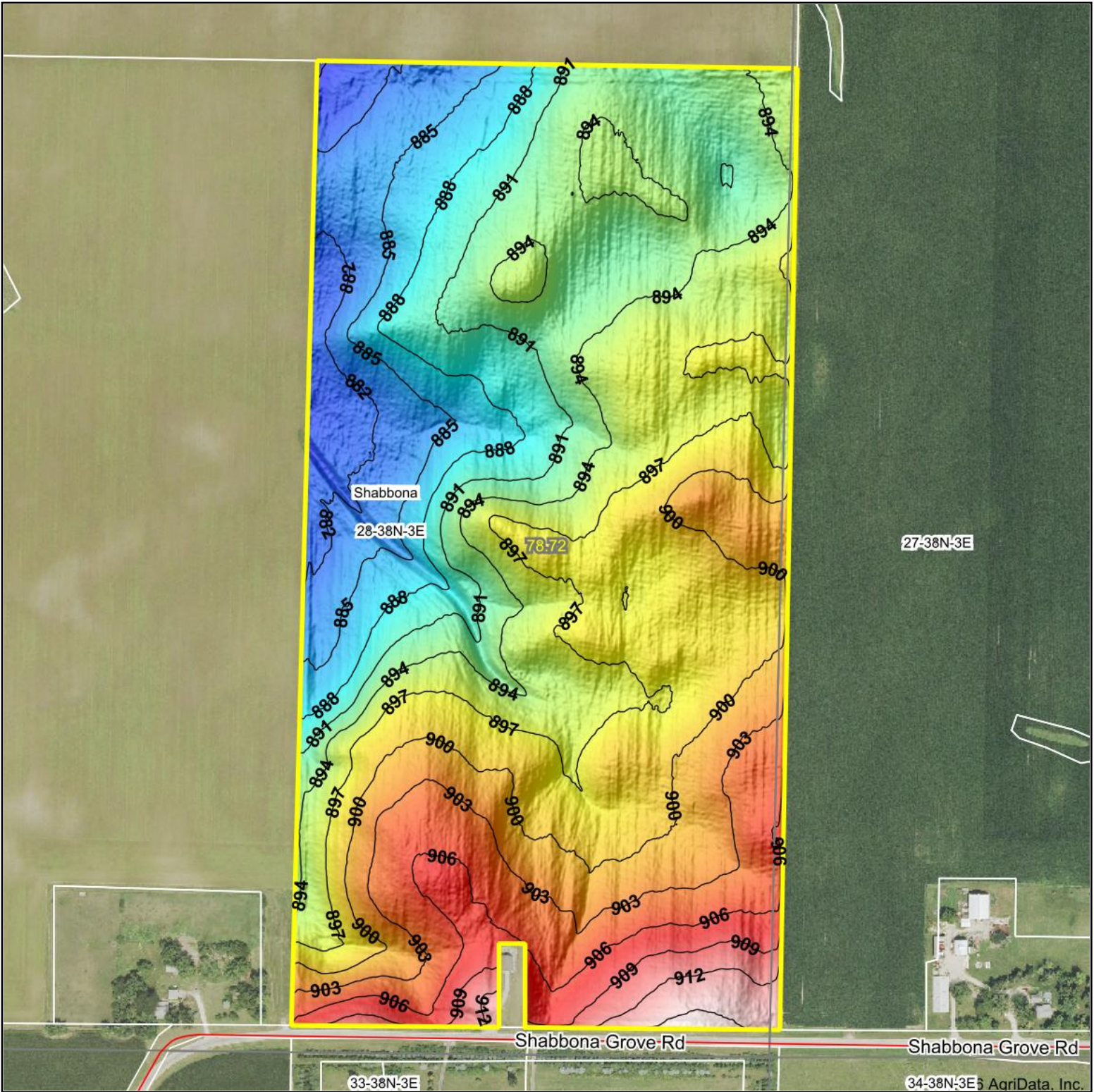
Crop yields and productivity (B811 EFOTG) are maintained at the following USDA web site: 2023 Illinois Soil Productivity and Yield Indices:

<https://efotg.sc.egov.usda.gov/#/state/IL/documents/section=2&folder=52809>

** Base indexes from Bulletin 811 adjusted for slope, erosion, flooding, and surface texture according to the Il. Soils EFOTG

*n: The aggregation method is "Weighted Average using all components"

Topography Hillshade



Maps Provided By:



© AgriData, Inc. 2025 www.AgriDataInc.com

Field borders provided by Farm Service Agency as of 5/21/2008.

Source: USGS 1 meter dem
 Interval(ft): 3
 Min: 878.8
 Max: 916.2
 Range: 37.4
 Average: 895.4
 Standard Deviation: 7.38 ft



2/27/2026

28-38N-3E
DeKalb County
Illinois

Boundary Center: 41° 44' 8.43, -88° 53' 20.96